



Senseair

Safe Start Team  
Automated Alcohol Screening



SCAN YOUR CARD



OR

START TEST FROM OTHER EQUIPMENT



1

BREATHE



2

RESULT



3

PASSED



FAILED



24V

Relay



## Access control

Getting started with Safe Start Team is very easy. Plug and play is an expression that suits Team well. In Safe Start Team, Senseair Wall does not need an internet connection and card registration is not required. You start a test by scanning any RFID tag or you can control the start of tests from other equipment via a 24 Volt input signal. Such a signal can come, for example, from an access control system or key cabinet. When you have breathed a light exhalation towards the inlet on the Senseair Wall, the test result (approved or not approved) is presented on the screen. The result can also be communicated via two different relay outputs to other equipment such as, for example, key cabinets or access control barriers.

Examples of installation options:

- In conjunction with an access control system ("at the gate" as the employees arrive/leave the workplace)
- When accessing vehicle keys (can be integrated with advanced key cabinet solutions)
- Entering a control room or a high risk area
- Connected to an entrance barrier, for control of vehicle drivers entering a site

[Click here to see how it works live](#)

[senseairsafestart.com](http://senseairsafestart.com)

## Contactless / Touch-free

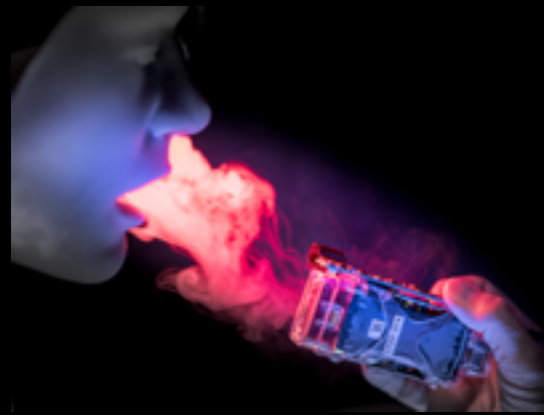
Senseair Safe Start enables alcohol screening of all safety-sensitive personnel on a daily basis. The use of contactless/ touch free assessment (no mouth-piece required) allows a quick and easy process where the identification and test takes normally 9 seconds.

The use of a tracer gas (carbon dioxide) allows accurate alcohol screening without mouthpiece. The user simply exhales towards the inlet from a distance of approximately 5 cm. An inbuilt fan ensures a constant flow of air from the front of the inlet to an exhaust outlet. This airflow also clears the sensor chamber of any residual alcohol or potential airborne contamination before each new sample.

[Click here to see the air flow](#)

## Possibility to upgrade

If the organization grows and there is a need to identify each person you can upgrade to Safe Start Flex, by doing so you can administrate according to policy and to whom an alarm shall be sent.



## Resilience of infra-red sensor technology

Infrared (IR) sensor technology has predominantly been used for premium, desk-top alcohol sensors. For example in law enforcement for confirmation/evidential testing, following initial roadside testing (using fuel cell sensor technology). Now the new IR technology is well suited for high volume applications as the sensor does not need to be calibrated. Today we only bring it in for cleaning and a checkup.

## YOU CAN TEST WITH FACE MASK ON

[Click here to see when the test is done with a face mask](#)

## E-learning

The system is delivered with an e-learning package with the clients specific polycies.



## A safer workplace

If maximising safety is your priority, why rely on the limited deterrence of occasional random testing?

Senseair Safe Start uses a zero tolerance limit and 100% testing to promote a sober workplace.

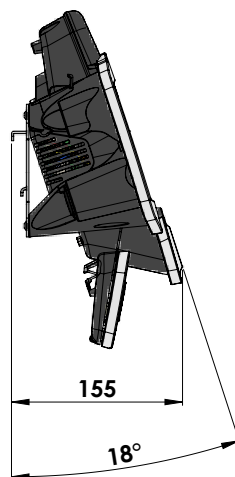
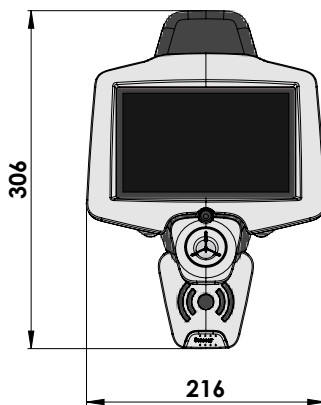


# Specifications



Operating environment	
Operating temperature	+0 to +40 °C
Storage temperature	-15 to +70 °C
Area of use	Indoors up to 2000 m altitude
Installation	Wall mounted
Functional characteristics and performance	
Sensor	Infrared optical sensor
Measurement method	Contactless / Touch-free (mouthpiece-free)
Capacity	9 seconds per test
RFID-reader	MIFARE Classic & Electro Marine (EM 4102)
Network	1 x RJ45 100 Mb/s
Administrative functions	Only offered in Safe Start Flex and Fleet
Alarm functions	Only offered in Safe Start Flex and Fleet
Relay output	Pulsed at negative and positive test (optional). 30 V, 2A
Input signal	Pulsed 24V DC signal starts test (optional)
Dimensions	
Weight	Approx. 2.0 kg, including power supply
Dimensions	306 X 216 X 155 mm, excluding power supply
Screen Size	7 inches
Electrical	
Power supply	100-230 V, 50/60 Hz
Maximum power consumption	50W
Tests	
Selectivity	Tested according to EN 50436-2: 2012
EMC	Tested according to EN/(IEC) 61326-1:2013, Electrical equipment, control and laboratory use – EMC requirements Part, Industrial requirements.
Service	
Service interval	12 months

Senseair Safe Start 1.10



## Features

- Fast 9 sec/test
- Contactless - no mouthpiece required
- “At the gate” verification of fitness for work = real deterrent/workplace safety
- Single annual service, irrespective of throughput
- Alcohol limit set for zero tolerance testing

Senseair AB  
 Flottiljgatan 49  
 SE-721 31 Västerås, Sweden  
 Tel: +46 (0) 653-717770  
 www.senseairsafestart.com  
 info@senseair.com

